

The Role of Factors Involved in Alice Syndrome

Review Article

Volume 3 Issue 2- 2022

Author Details

Asadi S^{1*}, Valizadeh G¹ and Chavoshi Y²

¹Director of the Division of Medical Genetics and Molecular Optogenetic Research, Medical Genetics-Harvard University, USA

²Division of Medical Genetics and Molecular Pathology Research, Boston Children's Hospital, Harvard University, USA

*Corresponding author

Shahin Asadi, Director of the Division of Medical Genetics and Molecular Optogenetic Research, Medical Genetics-Harvard University, USA

Article History

Received: August 1, 2022 Accepted: August 4, 2022 Published: August 8, 2022

Abstract

Alice in Wonderland Syndrome, or Todd's Disease, is a neurological disorder caused by the incorrect transmission of messages to the brain. Alice in Wonderland Syndrome was first discovered by a psychiatrist named Todd. He named the disease after the famous story of Alice in Wonderland, Alice Syndrome. The severity of the symptoms of Alice syndrome or Todd's disease varies from person to person. People's experiences during attacks of this disease are very different from each other. A typical experience with this disease may take several minutes. It is not yet known what causes Alice's syndrome, or Todd's aggressive disease. But doctors are trying to find out more about the disease. They know that the main problems occur in the patient's vision. Some doctors believe that there is no illusion and that patients with Alice syndrome are not mentally and neurologically ill.

Keywords: Alice syndrome; Todd's disease; Psychology disorder

Introduction to Alice Syndrome

Alice in Wonderland Syndrome, or Todd's Disease, is a neurological disorder caused by the incorrect transmission of messages to the brain. Alice in Wonderland Syndrome was first discovered by a psychiatrist named Todd. He named the disease after the famous story of Alice in Wonderland, Alice Syndrome. Todd discovered that the author of the novel, Lewis Carroll, had experienced strange mental and physical states, which he described in the form of this famous novel [1].

Todd's disease, also known as Alice syndrome, is a rare mental illness that periodically causes temporary cognitive changes in individuals. Patients sometimes think they are bigger or smaller than they really are. Some of the symptoms of this mental illness are a little more than feeling big or small. Patients may think that they are in a room where the furniture around them has been moved and is close to them. A greater distance from what exists in the real world. Such problems in this disease are the result of visual hallucinations. Factors that are caused by changes in the way the patient's brain perceives the environment [1].

This syndrome can affect several senses, including sight, touch, and hearing. Also, patients may sometimes have none of these symptoms

and only think that time passes faster or slower than it already is. Alice in Wonderland syndrome is more common in children than adults. Most children have a disordered perception of the environment. Alice Syndrome was first recognized in the 1950s by Dr. John Todd, an English psychiatrist. He discovered that the recorded signs and symptoms of patients were very similar to parts of Alice's character in the novel Alice in Wonderland by Lewis Carroll [1].

Signs and Symptoms of Alice Syndrome

The severity of the symptoms of Alice syndrome or Todd's disease varies from person to person. People's experiences during attacks of this disease are very different from each other. A typical experience with this disease may take several minutes. At the same time, some attacks may take up to half an hour. But several symptoms are almost common in most patients [2] (Figure 1).

Migraine, a small sign of Todd's disease: People with Alice syndrome usually have severe migraines. Doctors and researchers believe that this is the first sign of Todd's disease or Alice syndrome. Others believe that migraines are just one of the rare causes of the disease [2]. Size distortion in Alice syndrome: Microscopic sensation is one of the main symptoms of Alice syndrome. That in the world around



us, all things are getting smaller and smaller. Macroscopic sensation, or the sensation that the body or surrounding objects are enlarging, is also another important symptom of this disease. Usually, people with Todd's disease experience both senses [2].



Figure 1: Schematic of Alice in wonderland.

Perception distortion in Todd's disease: Patients with Alice syndrome sometimes feel that objects are too large and too close to them. This greatness is defined for them more than it is really [2]. The opposite of this sense is the camera. People with the disease usually feel that objects are smaller or farther away from normal than normal during attacks [2]. **Distortion of time in patients with Alice syndrome:** Some people with Alice syndrome lose their accurate understanding of time. They may feel that time passes faster or slower than it is actually [2] (Figure 2). **Noise distortion** Another symptom of Todd's disease: any sound, even normal ones, sounds quiet, loud, and annoying. This is one of the main symptoms of Alice syndrome. They feel that the sounds are very annoying and loud during the attacks and they are annoyed by the loud and annoying sounds [3].

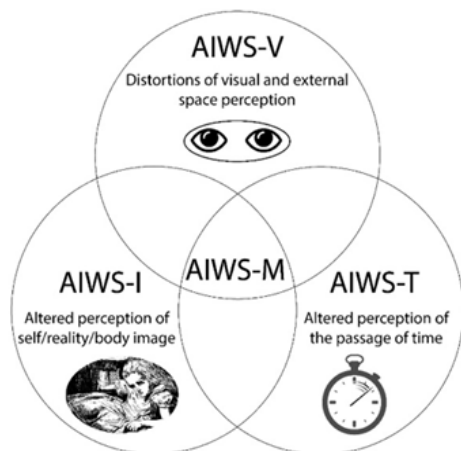


Figure 2: Schematic of the factors affecting alic syndrome.

Loss of limb control and coordination: Patients with Alice Syndrome feel that they can no longer control their limbs. With this way of thinking, patients change the way they move and walk in the real world. These changes cause inconsistencies in their bodies [3].

Etiology of Alice Syndrome

It is not yet known what causes Alice's syndrome, or Todd's aggressive disease. But doctors are trying to find out more about the disease. They know that the main problems occur in the patient's vision. Some doctors believe that there is no illusion and that patients with Alice syndrome are not mentally and neurologically ill. Researchers believe that abnormal bioelectrical activity in the brain causes abnormal blood flow and that the patient processes the environment differently. The patient with Todd Perception experiences a different hospitalization. This unusual bioelectrical activity may be the result of several reasons.

One study found that 33% of people with Alice's syndrome, or Todd's disease, had an infection. Only 6% of patients with Alice syndrome have migraines. However, a lot of research needs to be done to find out why migraines are the main cause of this syndrome. However, it is still emphasized that infection is the main cause of Todd's disease in children [4] (Figure 3).

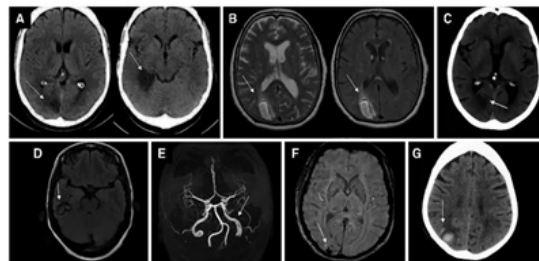


Figure 3: Radiological images of a brain disorder with alic syndrome.

Triggers for Alice Syndrome

High blood pressure, some cough medicines, hallucinogenic drugs, stroke and brain tumors are other possible causes of Todd's disease. Migraine is one of the very rare warning signs of Alice syndrome. But viral infections are another cause of Todd's disease. Genetics is another cause of Todd disease or Alice syndrome. There are no tests to diagnose the disease. Your doctor can determine if you have the disease by tracking your symptoms. Doctors usually use MRI scans if Todd's disease is suspected. MRI provides detailed images and interpretations of brain tissue. Because Todd's mental illness, or Alice's Syndrome, can last only a few minutes and is very transient, it is a little difficult for a doctor to diagnose [4].

Treatment routes for Alice Syndrome

If you want to know about the treatment option for Alice syndrome or Todd's mental illness, it is better to say that there is no cure for this disease. The best way to deal with this disease is to rest and wait. It is best to reassure those around you who have Todd's disease, or Alice's Syndrome, that these symptoms are not harmful. Doctors' advice may help prevent seizures. Treating an infection in the body stops the symptoms and helps control the disease. If you are under stress, it is best to use meditation to reduce seizures [5,6].

Discussion and Conclusion

This syndrome can affect several senses, including sight, touch, and hearing. Also, patients may sometimes have none of these symptoms and only think that time passes faster or slower than it already is. Alice in Wonderland syndrome is more common in children than adults. Most children have a disordered perception of the environment. People with Alice syndrome usually have severe migraines. Doctors and researchers believe that this is the first sign of Todd's disease or Alice syndrome. It is not yet known what causes Alice's syndrome, or Todd's aggressive disease. But doctors are trying to find out more about the disease. They know that the main problems occur in the patient's vision. Some doctors believe that there is no illusion and that patients with Alice syndrome are not mentally and neurologically ill. If you want to know about the treatment option for Alice syndrome or Todd's mental illness, it is better to say that there is no cure for this disease. The best way to deal with this disease is to rest and wait [1-6].

References

1. MASTRIA G, MANCINI V, VIGANÒ A, DI PIERO V (2016) Alice in Wonderland Syndrome: A Clinical and Pathophysiological Review. *BioMed Res Int* 8243145.



2. Stapinski H (2014) I Had Alice in Wonderland Syndrome. The New York Times.
3. O'Toole P, Modestino EJ (2017) Alice in Wonderland Syndrome: A real life version of Lewis Carroll's novel. *Brain Dev* 39(6): 470-474.
4. Farooq O, Fine EJ (2017) Alice in Wonderland Syndrome: A Historical and Medical Review. *Pediatr Neurol* 77: 5-11.
5. Weissenstein A, Luchter E, Bittmann MA (2014) Alice in Wonderland syndrome: A rare neurological manifestation with microscopy in a 6-year-old child. *J Pediatr Neurosci* 9(3): 303-304.
6. Writer: Lisa McMullin; Director: Daniel Wilson; Producer: Peter Leslie Wild (7 April 2020).

